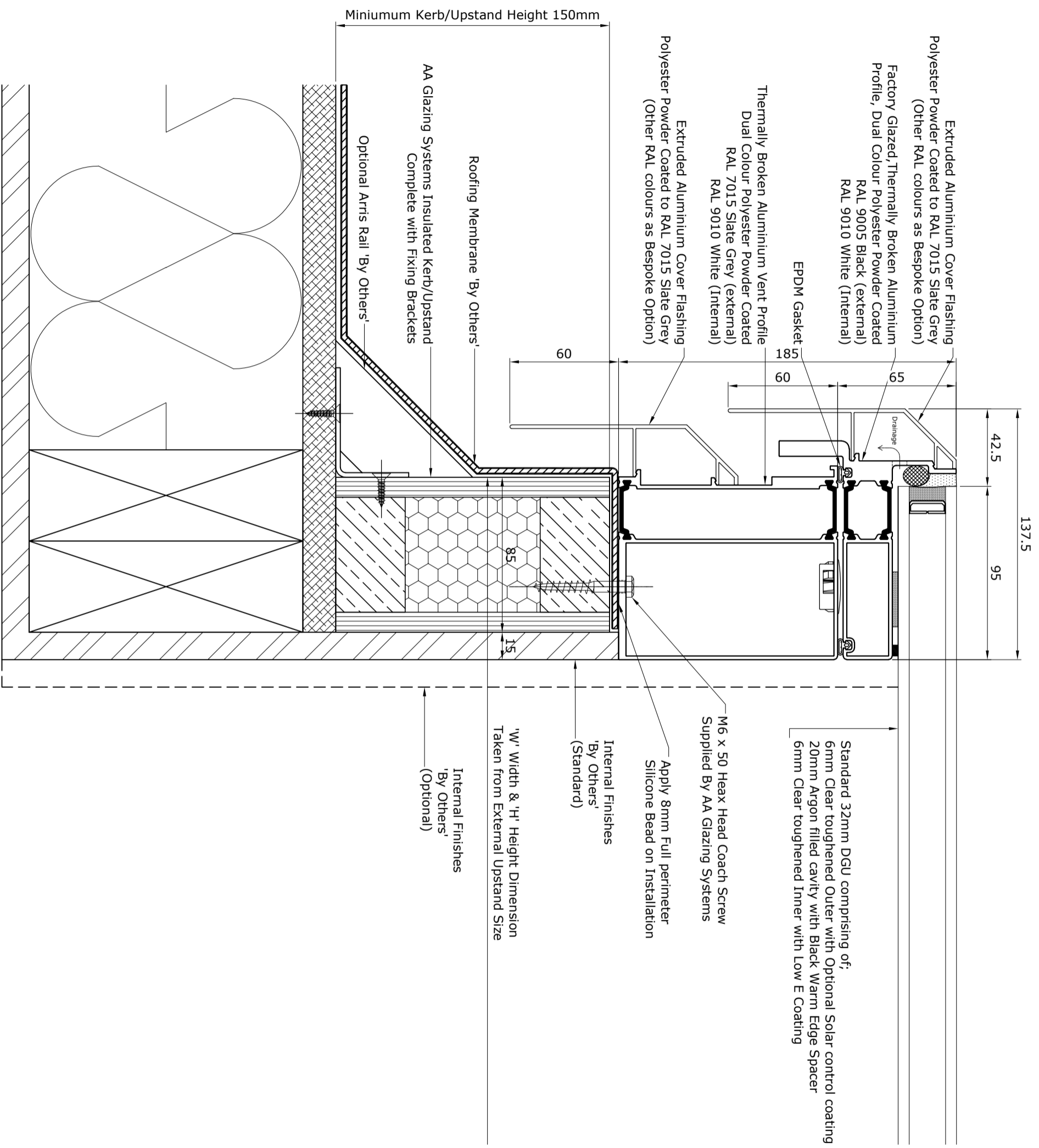


Rev	Date	Int	Notes
B	12-07-16	JW	Admin Update
A	23-10-13	GSH	First Issue
Project Electric Opening Roof Window			
Title Electric Opening Roof Window			
Scale 1:10 @ A3		Date 23-10-13	
Contract No		Drawing No VR-EOD-01	
		Revision B	



Registered Office: AA Glazing Systems Ltd, Unit 1 Mill Lane,
Waterford Ind Est, Gt. Messingham, Norfolk, PE32 2HT
Tel: 01485-520860 Fax: 01485-520861
Email: sales@aaaglazing.co.uk
Registered in England and Wales company no. 4346652
VAT No. 792 777 468



Standard 32mm DGU comprising of:
 6mm Clear toughened Outer with Optional Solar control coating
 20mm Argon filled cavity with Black Warm Edge Spacer
 6mm Clear toughened Inner with Low E Coating

M6 x 50 Heax Head Coach Screw
 Supplied By AA Glazing Systems

Apply 8mm Full perimeter
 Silicone Bead on Installation

Internal Finishes
 'By Others'
 (Standard)

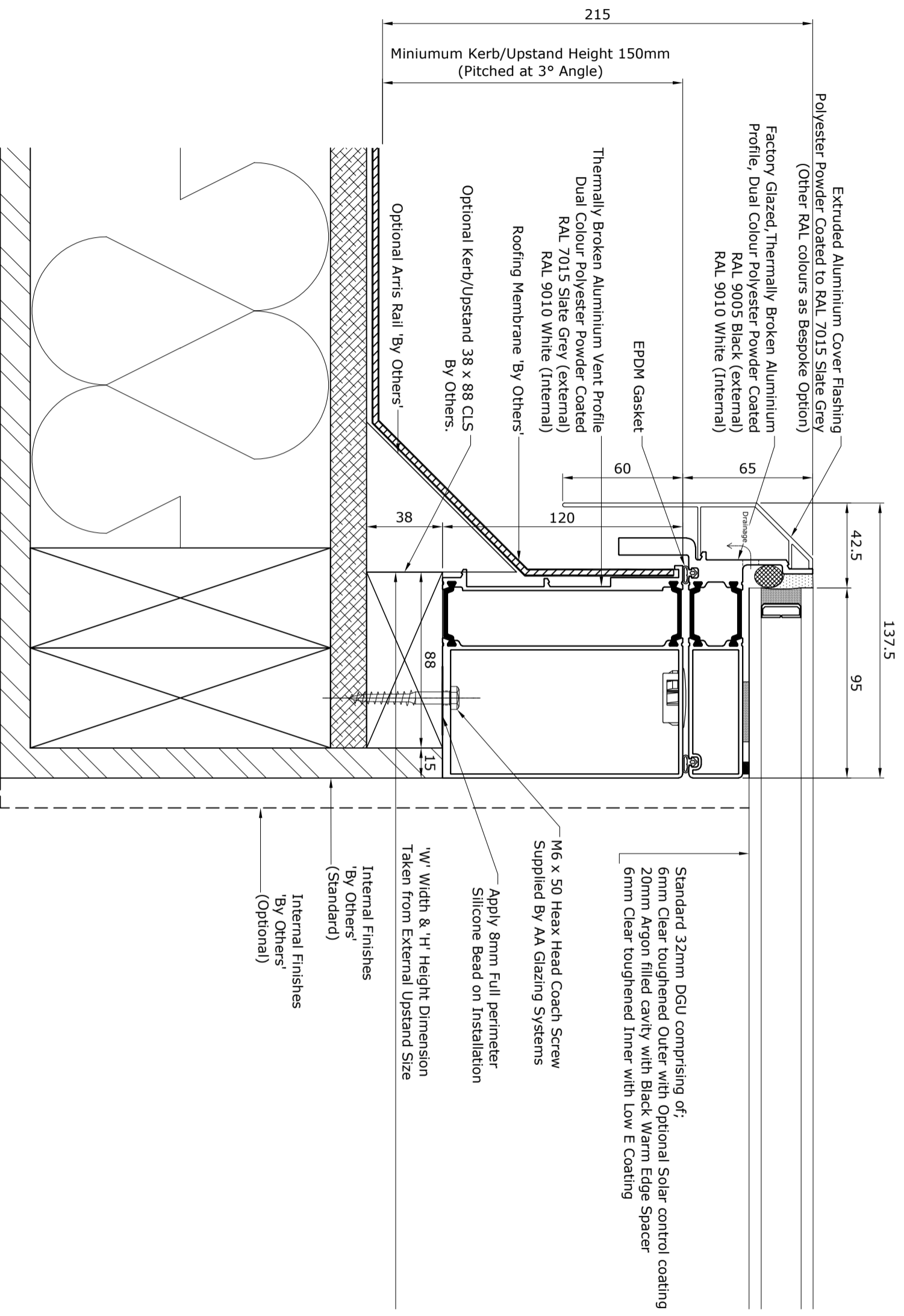
'W' width & 'H' Height Dimension
 Taken from External Upstand Size

Internal Finishes
 'By Others'
 (Optional)

Rev	Date	Int	Notes
B	12-07-16	JW	Admin Update
A	23-10-13	GSH	First Issue
Project	Electric Opening Roof Window		
Title	Standard Kerb / Upstand Detail		
Scale	1:2 @ A3	Drawn By	GSH
Contract No	23-10-13	Status	-
	VR-EOD-01	Revision	B



Registered Office: AA Glazing Systems Ltd, Unit 1 Mill Lane,
 Watford Ind Est, Gt. Messingham, Norfolk, PE32 2HT
 Tel: 01485-520860 Fax: 01485-520861
 Email: sales@aaaglazing.co.uk
 Registered in England and Wales company no. 4346652
 VAT No. 792 777 468



Project	Electric Opening Roof Window		
Title	Optional Kerb / Upstand Detail		
Scale	1:2 @ A3		
Drawn By	GSJ		
Status			
Contract No	VR-EOD-02		
Revision	B		
Rev	Date	Int	Notes
A	23-10-13	GSJ	First Issue
B	12-07-16	JW	Admin Update



Registered Office: AA Glazing Systems Ltd, Unit 1 Mill Lane,
Waterford Ind Est, Gt. Messingham, Norfolk, PE32 2HT
Tel: 01485-520860 Fax: 01485-520861
Email: sales@aaaglazing.co.uk
Registered in England and Wales company no. 4346652
VAT No. 792 777 468